

長角的人系列
Series of "Person with born"

柯適中 KO Shih-Chung

1966年出生於台灣南投畫家世家，父親柯耀東是台灣有名的水墨畫家，母親郭皆貴以花鳥畫聞名。1987年畢業於國立藝專西畫組，1991年取得美國芳邦藝術學院美術碩士，迄今為南開科技大學文化創意設計系教授，也是南開藝術中心主任，擔任大墩、玉山、全國等大型美展評審委員，投注於藝術教育與慈善不遺餘力。

柯適中於1990年時便於國立台灣美術館舉辦個展，先後亦獲得全國美展油畫第二名及南瀛獎的肯定。近三十年來舉辦過多達百餘場的個展與聯展，其作品典藏於國立台灣美術館、台南市文化中心、南投縣政府文化局、毓琇美術館等。

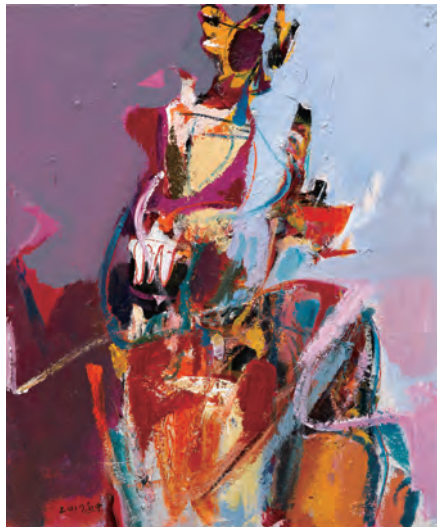
藝術家以英國美學家約翰·羅斯金(John Ruskin)的一段話詮釋自己的創作：真實、修正、困惑。真實是藝術完美的絕對測量，故優者近期真實之所能；修正也是一種絕對的測量，故優者亦盡其所能修正；困惑亦是一種絕對的測量，所有的優者皆困惑。

柯適中 KO Shih-Chung

Born in Nantou, Taiwan in 1966 from a painter family. Ko graduated from Western Painting Department of National College of Arts in 1987; has obtained four years later Arts Master degree from Fontbonne College, Missouri, USA.

He is appointed as a professor in Nan Kai University as well as chief director of their Art Centre. In 1990, he has held the first solo exhibition in National Museum of Taiwan in Taichung while he was only 24 years old. He was awarded the second prize in the 14th National Fine Arts Exhibition in 1995. And, in 1997, he had been chosen for excellence in the 10th Nan-Ying Art Exhibition. Since then, he never stop hold solo or group exhibitions in Taiwan. His works are in the collections of National Taiwan Museum of Art, Taichung; Yu Hsiu Museum, Nantou and among other private collections.

女人花系列 Series of "Women & Flower"



春系列 Series of "Spring"

