



Tree of Life in Island 5-3-1
島上的生命之樹 5-3-1
2013
C-Type Print 攝影輸出
76 x 130 cm

李正樂，韓國藝術家，一位利用攝影進行創作並記錄他的世界的藝術家，他從奇幻的事件中創作出不可思議又喚人感知的影像，而這些都真實發生在經過他精心挑選的重要場景，透過他熟練的攝影技巧呈現出來。

這些創作是透過複雜而煞費苦心的流程所製作出來的，並非數位化而來的，而是真實透由鏡頭的拍攝技術而得，耗費長時間的燈光操作，曝光，在拍攝景點上佈署各式各樣的道具，實境拍攝。這些身體參與的過程對藝術家來說有重大意義：透由這樣的苦力，讓他得以呈現另一個平行的世界。

‘Nabi’，蝴蝶，是一個珍貴的影像與象徵，它是一個精神世界裡的對話者，在藝術家的創作中，定位並揭示藝術家的所在。這些創造出來的光線，倍增成一個群體或一束束，組成一朵雲，在原野之間發光、閃爍，短暫停留一瞬間，閃光的那一瞬間，這些蝴蝶還說了一些事：這個世界召喚了藝術家的感知能力，而現在顯現給我們。

李正樂 (LEE Jeonglok)



Nabi 07 蝴蝶 2015
2015
C-Type Print 攝影輸出
120 x 160 cm

李正樂 (LEE Jeonglok)

Born in 1971 in Gwangju, South Korea.

學歷 | EDUCATION

B.F.A in Design, Gwangju University, Gwangju, South Korea - 1996
M.F.A in Photo Design, Graduate School of Hongik University, Seoul, South Korea - 1998
M.F.A in Fine Art Photography, Rochester Institute of Technology, Rochester, New York, USA - 2002

參展經歷 | SELECTED EXHIBITIONS AND ART FAIRS

- 2016 Nabi, London, UK with Pontone Gallery
- 2015 Nabi, Soul Art Space, Busan, Korea
See the Unseen, BMW PHOTO SPACE, Busan, Korea
Masters of Light, Shine Artists & Albemarle Gallery, London, UK
- 2014 Journey of Light, Shinsegae Gallery, Busan, Korea
Let There Be The Light, Zendai Contemporary Art Space, Shanghai, China
Palette of Light, Kwanhoon Gallery, Seoul, Korea
Tree of Life in Island, Shinsegae Gallery, Seoul, Korea
Tree of Life in Island, Shinsegae Gallery, Gwangju, Korea
Ha Jung-woong Young Artists "Light-2014", Kwangju Museum of Art, Gwangju, Korea
- 2013 Tree of Life in Island, Soul Art Space, Busan, Korea
Light & Revelation, Vit Gallery, Seoul, Korea
Meditated Landscape, Woljeon Museum of Art, Icheon, Korea
Breath of Tree, Cheonan Arts Centre Museum of Art, Cheonan, Korea
- 2012 Mudeung Tales, TODAY ART MUSEUM, Beijing, China
Decoding Scape, The Museum of Photography, Seoul, Korea
Decoding Scape, Dudon Museum of Art, Jeju, Korea
See the Unseen, Soul Art Space, Busan, Korea
- 2011 Mythology Today, Pohang Museum of Art, Pohang, Korea
The 3rd International Contemporary Art: Creation from the Fingertips, Gwangju Biennale Hall, Gwangju, Korea
- 2010 On the Cutting Edge: Aspects of Korean Contemporary Photography, National Taiwan Museum of Fine Arts, Taichung, Taiwan
Nanjing Biennale: AND_WRITERS, Jiangsu Provincial Art Museum, Nanjing, China
Tree of life, Vit Gallery, Seoul, Korea
Tree of life, Shinsegae Gallery, Gwangju, Korea
- 2009 New Digital Age, Novosibirsk State Art Museum, Novosibirsk, Russia
Jeonglok LEE, Gallery Kong, Seoul, Korea
- 2008 Contemporary Korean Art, Korean Cultural Centre, London, UK
Art at Home: Wonderful Life, Doosan Art Centre, Seoul, Korea
Factory, Ilmin Museum of Art, Seoul, Korea
- 2007 Shanghai eArt Festival, Xuhui Art Museum, Shanghai, China
The Mythic scape, Trunk Gallery, Seoul, Korea
The Mythic scape, Shinsegae Gallery, Gwangju, Korea

作品典藏 | COLLECTIONS

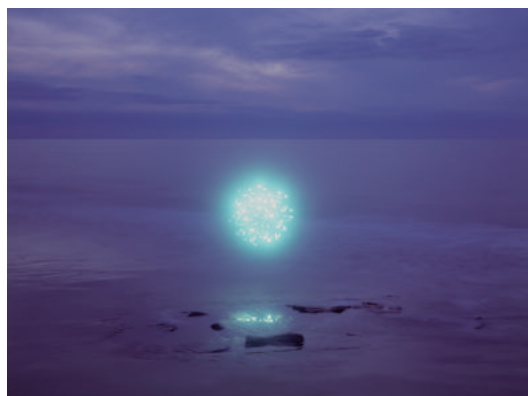
Art Bank, National Museum of Contemporary Art, Gwacheon, Korea
Gwangju Museum of Art, Gwangju, Korea
Daelim Museum of Art, Seoul, Korea
Art Sonje Museum, Gyeongju, Korea
Westin Chosun Hotel, Busan, Korea
Ilmin Museum of Art, Seoul, Korea

獲頒獎項 | AWARDS

2006 Grand Prize, Shinsegae Art Awards



Nabi 05 蝴蝶 05
2015
C-Type Print 攝影輸出
90 x 120 cm



Nabi 12 蝴蝶 12
2015
C-Type Print 攝影輸出
120 x 160 cm